

Energy Based Lasers and Body Contouring Cosmetic Bootcamp

New York City
September 2017

JEANINE B. DOWNIE, MD
DIRECTOR, IMAGE DERMATOLOGY, PC
ASSISTANT ATTENDING, MOUNTAINSIDE & OVERLOOK HOSPITALS
MONTCLAIR, NJ. COPYRIGHT © 2017 IMAGE DERMATOLOGY P.C. AND JEANINE B. DOWNIE, M.D. ALL RIGHTS RESERVED.

Disclosures

- | | |
|---------------------|-------------------|
| • Johnson & Johnson | Allergan |
| • Valeant | Pfizer |
| • Galderma | Novartis |
| • Intendis | Skin Medica |
| • BTL | ThermiRF/Almirall |
| • Innocutis | Proctor & Gamble |
| • Revance | Restorsea |
| • Theraplex LLC | Sente |
| • Cutera | Lifes 2 Good |
| • Medimetrix | Aclaris |
| • LaViv | Neothetics |
| • Ranbaxy | Perigee Medical |
| • Alphaeon | Stratamed |
| • Merz | Nutrafol |

Thermitight

- ▶ First aesthetic technology that uses thermistor-regulated radiofrequency energy to achieve desired cosmetic results.
- ▶ The Thermi RF system uses a tiny treatment probe that is the size of a pen point to gently heat specific tissues to a pre-determined therapeutic temperature.
- ▶ The surgeon applies a controlled amount of thermal energy to the targeted tissue.
- ▶ The tip of the tiny probe provides constant feedback of the actual temperature during treatment.

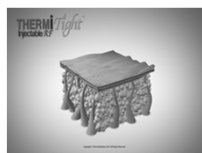
Thermitight

- ▶ An infrared camera is used to monitor skin temperature to ensure that the patients treatment is both safe and effective.
- ▶ Minimally invasive, painless, single treatment solution, little to no downtime.
- ▶ Can be used for jawline, neck, arms, knees, upper back and abdomen.
- ▶ Restructures collagen by breaking through fibrous bands that cause dimples, so it treats cellulite on the thighs, abdomen and buttocks.
- ▶ A head wrap must be worn for forty-eight hours after jawline/neck procedure.

The First Injectable RF

- Thermistor regulated radio frequency
- ✓ Thermal Image Guidance for improved safety and predictable outcomes
 - ✓ Temperature as endpoint

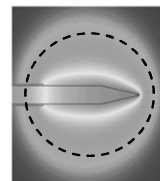
- Patient Benefits
- ✓ Micro-invasive
 - ✓ Local anesthesia
 - ✓ Fast recovery
 - ✓ Long lasting results



THERMIRF-HOW IT WORKS TEMPERATURE CONTROLLED RADIO FREQUENCY

“The Science of Heat”
Use temperature as an endpoint

- ✓ Smooth skin @ 42C
 - ✓ Shrink fibrous septae @ 55-65C
 - ✓ Melt fat @ 70C
 - ✓ Disable nerves @ 85C
- (ThermiRF, Data on File, 2015)

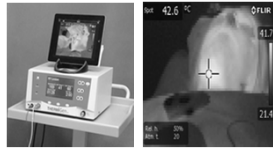


Challenges in Skin Tightening

8

Can you apply extreme temperatures to sub dermal tissues to effect tightening while preserving integrity of epidermal tissue?

50-70°C – sub dermis
41-43°C - epidermis



Thermitight Video

15



Non-Invasive Fat Melting Best/Poor Candidates

22

- ▶ patient must have pinchable fat
- ▶ good skin quality
- ▶ if doing Coolsculpting or SculpSure the patient must fit in the adaptor
- ▶ they must have the capacity to understand the side effects/potential pain and/or tenderness post procedure
- ▶ a bad patient is someone with poor skin quality, visceral fat, is morbidly obese or has excessive loose skin.

(Derm Times, January 2016).

The FuturaFit Solution

23

- ▶ Proprietary electronic TranStim™ technology
- The Secret to Success
- ▶ Works out the patient electronically via very deep and prolonged muscle contractions
 - ▶ Move fat to circulatory/lymphatic system where it can be metabolized

Vanquish

28

The world's first:

- Non contact, panel array
- Multipolar, emits selective RF energy to treat the entire core in one application
- Selective RF™ treatment
- With Impedance Matching that targets thermal effects into the fat layer while protecting surrounding skin and tissue
- For non-invasive circumferential reduction of the abdomen,
- Without downtime, discomfort, or consumables.

(Journal of Drugs in Dermatology, June 2015).



Vanquish

29

- ▶ Painless, effective fat reduction device with the largest treatment area in the industry
- ▶ Uses selective RF (multipolar) energy technology, non-invasive
- ▶ Induces apoptosis in the fat layers, in short 45 minute sessions (4-6 sessions recommended)
- ▶ Fat has different absorption properties due to it 's diminished water content and this device takes advantage of that to selectively heat the fat
- ▶ The applicator – generator circuitry delivers energy selectively to tissue layers with specific impedance, focusing the RF energy into fat layers, while restricting the delivering of high heat elsewhere, which protects the surrounding layers

(Frentzen, J. Aesthetic Guide. May/June 2013).

INTRAcel

32

FRM [Bipolar / Monopolar]
Mode SRR [Superficial RF Rejuvenation] Mode

Specification

33

Applied Energy	RF(Radio Frequency)-1Mhz
Out Power	Monopolar : up to 700W (Peak power & 2000)
	Bipolar : up to 700W (Peak power & 2000)
Spot Size(Treated Area)	1cm X 1cm
Tip Types	FRM Bipolar FRM Monopolar SRR Superficial RF Rejuvenation
Disposable tip matrix	49 electrode needles
Data on File, Jelsys 2016	

Needle Composition

34

- Substantial insertion depth by needles and RF irradiation range
- There are about 0.2mm differences between needle depth and substantial insertion depth. RF irradiation ranges are up, down, and both side of 0.3mm
- Depths are Adjustable in 4 different levels
(Data on File, Jelsys 2016)

Needle Depth	Body Insertion Depth	In body RF Range	Application
SRR	0.3mm	0.3mm	Rejuvenation, Fine lines,
	0.4mm	0.3mm~0.9mm	
FRM	0.5mm	0.3mm~0.9mm	Wrinkles, Tightening, Pores, Acne
	0.8mm		
	1.2mm	0.9mm~1.5mm	Folds, Light Scars, Tightening,
	1.8mm	1.3mm~2.1mm	Deep Scars, Lifting

How INTRAcel works?

35

The diagram illustrates the three-step process of INTRAcel treatment: 1. Inserting needles (0.02sec), 2. RF emission (0.03 ~ 0.10sec), and 3. Removing needles (0.02sec).

Histology Results

36

Excel V


47

- Designed by clinicians
- Dual wavelength, high-power aesthetic platform
 - 532 nm KTP
 - 1064 nm Nd:YAG
- Solid state design
 - Real time calibration
 - Continuous monitoring of laser output
 - No consumables (i.e. dyes, cooling agents)
- Compact, 'smart' design
 - Small, quiet footprint
 - 30 second start up
 - Intuitive user interface

Excel V

Advanced Design + Features

48





- ▶ Excellent visibility
 - ▶ Large sapphire window
 - ▶ Visibility throughout treatment
- ▶ Adjustable spot size
 - ▶ On-the-fly adjustments with auto calibration
 - ▶ 2 mm–12 mm
- ▶ Sapphire contact cooling
 - ▶ Pre, parallel, post, and bulk cooling
 - ▶ Selectable from 5–20 °C

Excel V

Specifications

49

	CoolView		GenesisV
Wavelength	532 nm	1064 nm	1064 nm
Spot Size	2-12 mm (0.1 mm increments)		8 mm (fixed)
Fluence	1.8-42 J/cm ²	2-300 J/cm ²	4-7 J/cm ²
Pulse Duration	1.5-40 ms	5-60 ms	0.3 ms
Rep Rate	2-12 Hz	0-2 Hz	0-10 Hz
Cooling	5-20 °C		N/A

Excel V

Indications

50

Vascular Lesions

- Telangiectasia
- Cherry angiomas
- Port Wine Stains
- Leg Veins
- Neovascularization
- Rosacea/mottling
- Spider angiomas
- Venous lakes
- Diffused redness

Benign Pigmented Lesions

- Lentiginos
- Freckles
- DPN's
- Café-au-lait Stains
- Poikiloderma
- Melasma

Cutaneous Lesions

- Verruca (warts)
- Keratoses
- Skin Tags
- Sebaceous hyperplasia

Other Applications

- laser genesis
- Scars (acne, surgical)
- Active Acne
- Fine lines/wrinkles
- Small area hair removal